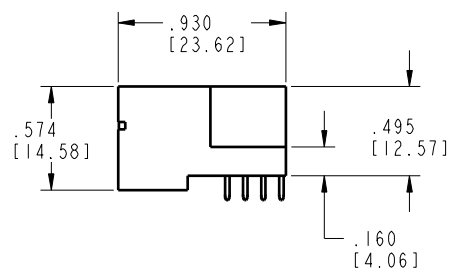
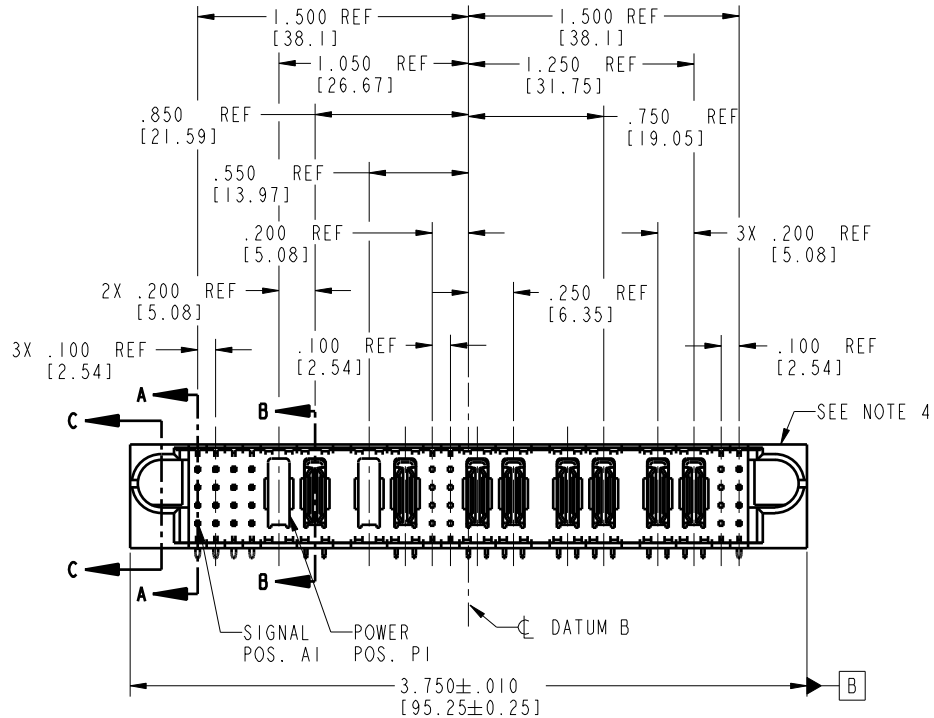


Tous droits strictement réservés. Reproduction ou communication o des liers interdite sous quelque forme que ce soit sans autorisation écrite du propriétaire. Propriété de c FCI. Droits de reproduction FCI.

FCI

All rights strictly reserved. Reproduction or issue to third parties in any form whatsoever is not permitted without written authority from the proprietor. Property of FCI. Copyright FCI.

PRODUCT NO.	ROWS	SIGNAL				POWER				SIG		POWER				SIG				
		E1	1	2	3	4	P1	P2	P3	P4	5	6	P5	P6	P7	P8	P9	P10	7	8
51939-122-- NOTE 3	D C B A	U U U U	T T T T	S S S S	S S S S	X	PA	X	PA	X X X X	X X X X	PA	PA	PA	PA	PA	PA	X X X X	X X X X	U U U U



CODE	DIM "M" MATING LENGTH	CONTACT TYPE
H	.220 [5.59]	SIGNAL
R	.270 [6.86]	SIGNAL
S	.270 [6.86]	SIGNAL
T	.270 [6.86]	SIGNAL
U	.270 [6.86]	SIGNAL
PA	N/A [N/A]	POWER
X	OMITTED	OMITTED

mat'l code				tolerances unless otherwise specified		CUSTOMER	
SEE NOTE 2				.XX±.01/0.X±0.3		COPY	
lir	ecn no.	dr	date	linear	.XXX±.005/0.XX±0.13	projection	
A	V04-0546	TAB	05/25/04	angles	.XXX±.002/0.XXX±0.051		
B	DG06-0013	RYAN	01/11/06	dr	0°±2°		
				engr	T. BRUNGARD 05/25/04	INCH/MM	
				chr	M. GRAY 05/25/04	scale	
				oppd	M. GRAY 05/25/04	1:1	
sheet index	revision	B	B	B	B		
	sheet	1	2	3	4		

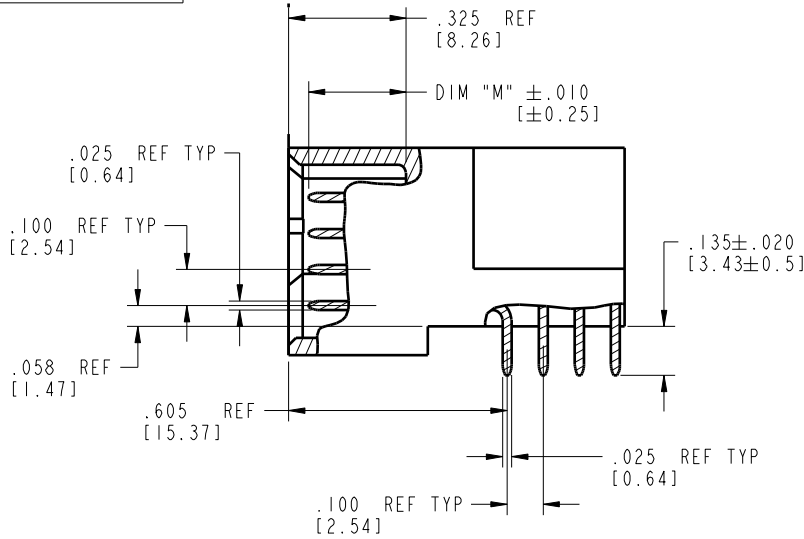
CUSTOMER		FCI		www.fciconnect.com	
COPY		title		16S + 4P + 8S + 6P + 8S	
projection		product family		PwrBlade	
		size		213	
		dwg no		sheet	
1:1		A		1 of 4	
		code			
		22526			

Pro/E

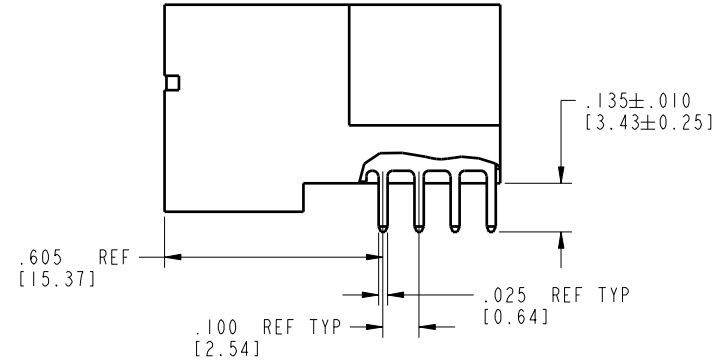
Tous droits strictement réservés. Reproduction ou communication à des tiers interdite sous quelque forme que ce soit sans autorisation écrite du propriétaire. Propriété de c FCI. Droits de reproduction FCI.

All rights strictly reserved. Reproduction or issue to third parties in any form whatsoever is not permitted without written authority from the proprietor. Property of FCI. Copyright FCI.

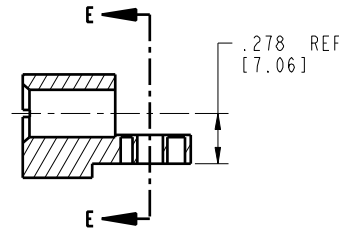
PRODUCT NUMBER
51939-122--
NOTE 3



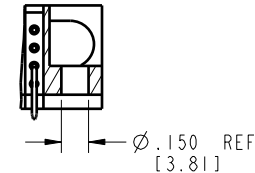
BROKEN-OUT SECTION A-A
SCALE 2:1



BROKEN-OUT SECTION B-B
SCALE 2:1



SECTION C-C



PARTIAL SECTION E-E

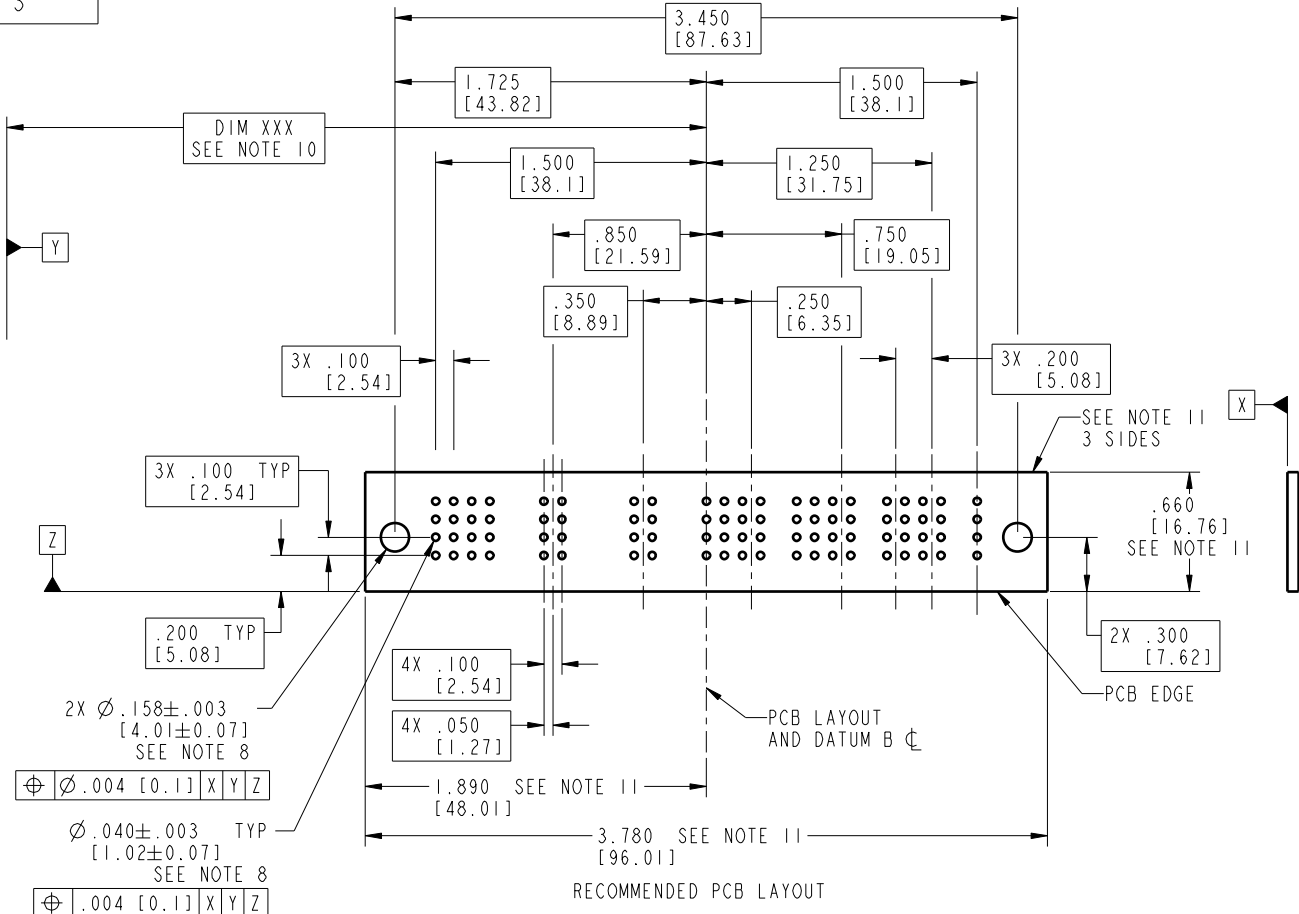
mat'l code SEE NOTE 2				tolerances unless otherwise specified		CUSTOMER		FCI		www.fciconnect.com		
lir	ecn no.	dr	date	linear .XX±.01/0.X±0.3 .XXX±.005/0.XX±0.13 .XXX±.002/0.XXX±0.051	angles 0°±2°	dr T. BRUNGARD 05/25/04	eng M. GRAY 05/25/04	chr M. GRAY 05/25/04	appd M. GRAY 05/25/04	COPY		
B										projection	title 16S + 4P + 8S + 6P + 8S RIGHT ANGLE SOLDER HEADER	
										INCH/MM	product family PwrBlade	code 213
										scale 1:1	size A	sheet 2 of 4
sheet index	revision sheet										dwg no 51939-122	

Pro/E 3 | code code 22526 4

Tous droits strictement réservés. Reproduction ou communication o des liers interdite sous quelque forme que ce soit sans autorisation écrite du propriétaire. Propriété de c FCI. Droits de reproduction FCI.

All rights strictly reserved. Reproduction or issue to third parties in any form without is not permitted without written authority from the proprietor. Property of FCI. Copyright FCI.

PRODUCT NUMBER
51939-122--
NOTE 3



3X .100 TYP [2.54]
3X .100 [2.54]
3X .200 [5.08]
2X ϕ .158 \pm .003 [4.01 \pm 0.07] SEE NOTE 8
 ϕ .004 [0.1] X Y Z
 ϕ .040 \pm .003 TYP [1.02 \pm 0.07] SEE NOTE 8
 ϕ .004 [0.1] X Y Z

mat'l code SEE NOTE 2				tolerances unless otherwise specified		CUSTOMER		FCI		www.fciconnect.com	
lir	ecn no.	dr	date	linear	.XX \pm .01/0.X \pm 0.3	COPY		projection	title 16S + 4P + 8S + 6P + 8S RIGHT ANGLE SOLDER HEADER		
B					.XXX \pm .005/0.XX \pm 0.13						
				angles	.XXX \pm .002/0.XXX \pm 0.051						
				dr	0 $^{\circ}$ \pm 2 $^{\circ}$	T. BRUNGARD 05/25/04		INCH/MM	product family	PwrBlade	code
				engr		M. GRAY 05/25/04		scale	size	dwg no	213
				chr		M. GRAY 05/25/04		1:1	A	51939-122	sheet
				appd		M. GRAY 05/25/04					3 of 4
sheet index	revision	sheet									

code code 22526

Tous droits strictement réservés. Reproduction ou communication o des liers interdite sous quelque forme que ce soit sans autorisation écrite du propriétaire. Propriété de c FCI. Droits de reproduction FCI.



All rights strictly reserved. Reproduction or issue to third parties in any form whatsoever is not permitted without written authority from the proprietor. Property of FCI. Copyright FCI.

1 | 2

3 |

4

PRODUCT NUMBER

51939-122--
NOTE 3

NOTES:

1. DIMENSIONS AND TOLERANCES ARE IN ACCORDANCE WITH ASME Y14.5M, 1994 UNLESS OTHERWISE SPECIFIED.

CONNECTOR NOTES:

- 2. HOUSING MATERIAL: UL 94 V-0 GLASS FILLED HIGH-TEMP THERMOPLASTIC
POWER CONTACT MATERIAL: COPPER ALLOY
SIGNAL PIN MATERIAL: COPPER ALLOY
- 3. PLATING:
51939-122; 51939-122LF; 51939-122GLF SEE PRINT 10064183
- 4. MANUFACTURER'S NAME, P/N, AND DATE CODE TO APPEAR ON THIS SURFACE.
- 5. PRODUCT SPECIFICATION GS-12-149.
APPLICATION SPECIFICATION BUS-20-067.

6. PACKAGED IN TRAYS.

PCB NOTES:

- 7. ALL HOLE DIAMETERS ARE FINISHED HOLE SIZE.
- 8. MOUNTING HOLES, WHERE APPLICABLE, ARE UNPLATED.
- 9. $\varnothing .0453 \pm .0010$ [1.151 \pm 0.025] DRILLED HOLES PLATED WITH .0003 [0.008] MIN SnPb OVER .001 [0.03] TO .003 [0.08] Cu PLATING TO ACHIEVE $\varnothing .040 \pm .003$ [1.02 \pm .07] HOLE.
- 10. "DIM XXX" TO BE DETERMINED BY THE CUSTOMER.
- 11. CONNECTOR KEEP-OUT ZONE.

mat'l code		SEE NOTE 2		tolerances unless otherwise specified		CUSTOMER		A FCI		www.fciconnect.com	
lir	ecr no.	dr	date	linear	.XX±.01/0.X±0.3	COPY		projection		title	
B					.XXX±.005/0.XX±0.13					16S + 4P + 8S + 6P + 8S RIGHT ANGLE SOLDER HEADER	
				angles	.XXX±.002/0.XXX±0.051	INCH/MM		product family		code	
				dr	0° ± 2°	1:1		PwrBlade		213	
				eng	T. BRUNGARD 05/25/04			size		sheet	
				chr	M. GRAY 05/25/04			A		4 of 4	
				appd	M. GRAY 05/25/04			51939-122			
sheet index	revision sheet										

A

A

B

B

1 | 2

Pro/E

3 |

code code 22526

4